

Rosella

Scarf with Lace Pattern



Rosella

Scarf with Lace Pattern



Quality:

Rosella (Gründl)
50 % acrylic, 50 % cotton
200 g / 820 m

Size:

Width: approx. 36 cm, Length: approx. 195 cm (meas after blocking)

Usage: approx. 200 g in col. of your choice.

Materials: (adjust needle size to achieve given tension)

1 circular needle in size 3,5mm - 4,0mm

Stitch Pattern:

Lace Pattern 1 - 3: (see chart) (amount of sts multiple of 10 plus 1)

Only the RS rows are shown. P all sts and yos in WS rows.

Moss Stitch: (amount of sts multiple of 2 plus 1)

RS rows: selvedge st, alt p1, k1 to end then p1, selvedge st.

Next row: knit the purls and purl the knits of previous row.

Selvedge sts:

Sl 1 k-wise wyib at beg and k last st of each row.

Tension:

23 sts and 33 rows to 10 cm meas. over lace pattern using size 3,5 mm needles or size needed to achieve given tension.

Tip: To achieve the same length of the lace pattern 1 at the beginning and lace pattern 3 at the end of the scarf weigh the whole ball (and your needles) before beginning work and then when you are finished with the lace pattern 1. The difference (= weight of lace pattern 1 plus moss st) should be left at the end of the ball to complete lace pattern 3.

Instructions:

Cast on 85 sts (including 2 selvedge sts) and beginning with a WS row work 7 rows in moss st. Then cont. with lace patt 1 according to chart.

Next row: selvedge st, 6 sts in moss st patt, 71 sts in lace pattern 1 (7 x patt repeat (10 sts) and ending with st after repeat, 6 sts in moss st patt, selvage st.

Repeat rows 1-2 cont. throughout until work meas. total of 22 cm ending with a WS row.

Cont. with lace patt 2 (rows 1-8 in chart) until work meas. total of approx. 170 cm ending with 8th row of chart.

Then work lace pattern 3: selvedge st, 5 sts before the patt repeat, then 6 times patt repeat, and end row with the 6 sts after patt repeat and 1 selvedge st. Rep rows 1-2 cont.

When scarf meas. 190 cm total ending with a WS row work 6 rows in moss st patt.

Next row: cast off all sts k-wise.

Making up:

Weave in ends. Pin out scarf to measurements given, cover with a clean, damp cloth and leave to dry

Rosella

Scarf with Lace Pattern



naturally out of sunlight. Do not steam press.

Abbreviations:

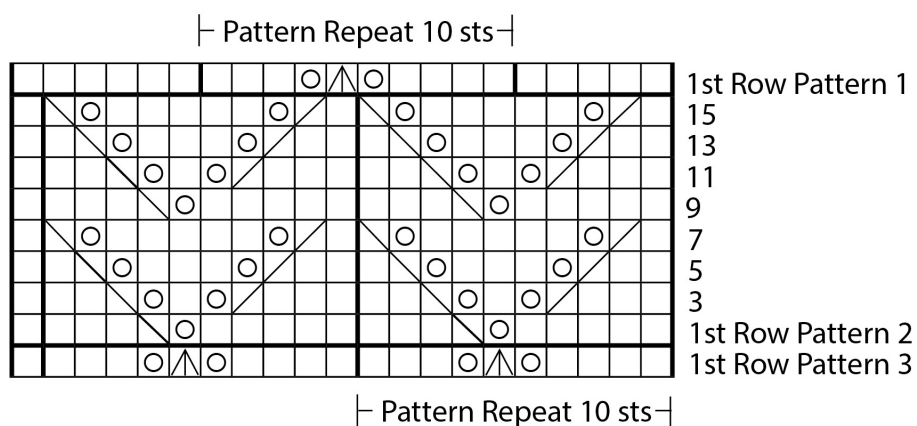
approx. = approximate(ly) • cm = centimetre(s) • cont = continuously • g = gramme(s) • inc(s) = increase(s) • k = knit • k-wise = knit wise • m1tbl = make one through back loop • m = metre(s) • mm = millimetre(s) • meas = measure(d) • pssso = pass slipped stitch over prev knit st(s) • patt = pattern • prev = previous(ly) • p = purl • p-wise = purl wise • rep = repeat • RS = right side • sl = slip stitch • skp = sl 1, k1, pssso • sk2p = sl 1, k2tog, pssso • (s) = stitch(es) • tog = together • wyib = with yarn held to back of work • WS = wrong side • yo(s) = yarn over (needle)/ yarn round needle

Rosella

Scarf with Lace Pattern

Rosella:
Scarf with Lace Pattern

Chart:



□ = k1

▤ = k2tog

▥ = skp

▧ = sk2p

○ = yo

Rosella

Scarf with Lace Pattern

