

# Pacific Lace

Shawl with Lace Pattern



# Pacific Lace

## Shawl with Lace Pattern

### Quality:

Pacific Lace (Gründl)  
80 % acrylic, 10 % wool, 10 % alpaca  
100 g / 550 m

### Size:

Width: approx. 41 cm, Length: approx. 200 cm

### Usage:

approx. 200 g col. 03 (hibiscus)

### Needles:

1 pair of circular needles 3,5mm - 4,0mm (UK 9/10-8)

### Pattern:

Lace patt: (multiple of 12 sts + 1 st + 2 selvedge sts)

Work as shown in chart: Rep rows 1 - 10 cont. Only RS rows are shown. In WS rows p all sts and yos. Begin with the st before patt rep, work patt rep cont., end with sts after rep.

Garter stitch:

RS and WS rows: k all sts.

Slip stitch selvedge edge:

Beg of row: sl st k-wise wyib.

End of row: k 1.

**Tension:** (meas over lace patt, after blocking)

24 sts x 37 rows = 10 cm x 10 cm

### Instructions:

Cast on 99 sts + 2 selvedge sts (101 sts total) and work first row as a WS row.

Next row (1st row in chart): sl st selvedge edge, k 1 (garter st), 97 sts in lace patt, k 1 (garter st), 1 sl st selvedge edge.

Cont until work meas 200 cm ending with a WS row.

Next row: k all sts. Then cast off all sts k-wise.

Making up:

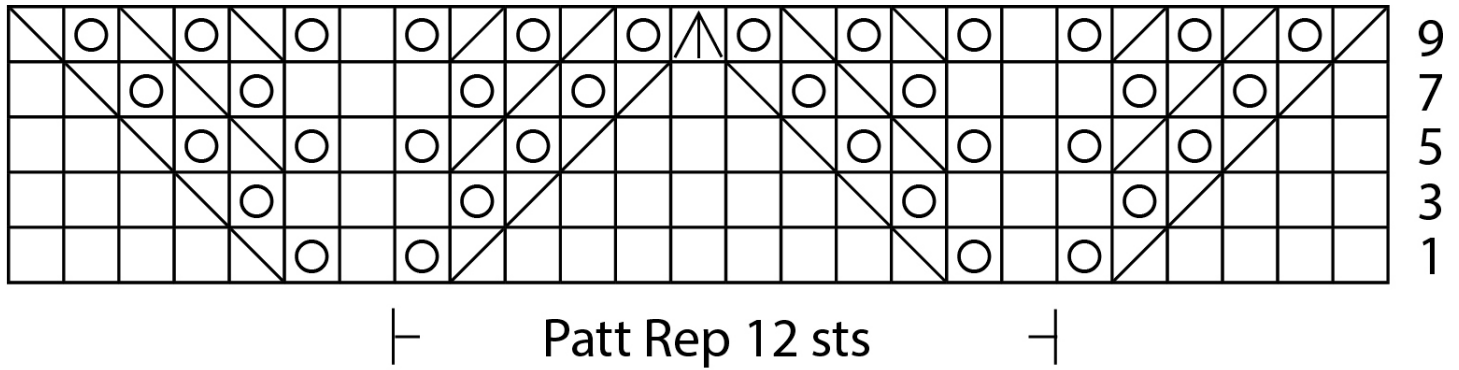
Pin out shawl to measurements given, cover with a clean damp cloth and leave to dry out of direct sunlight.

### Abbreviations:

beg = begin(ning) • cm = centimetre(s) • col = colour(s) • cont = continue (continuously) • foll = follow(ing) • g = gramme(s) • k = knit • m = metre(s) • mm = millimetre(s) • meas = measure(d) • p = purl • p-wise = purl wise • patt = pattern • pssso = pass slipped stitch over previous stitch • rep = repeat • RS = right side • sl = slip • st(s) = stitch(es) • tog = together • WS = wrong side • wyib = with yarn in back • yo(s) = yarn over(s)

# Pacific Lace

Shawl with Lace Pattern



□ = k 1

▤ = k 2 tog

▥ = sl 1, k 1, psso

▧ = sl 1, k 2 tog, psso

○ = 1 yo