

Royal

Hat in honeycomb pattern



Royal

Hat in honeycomb pattern



Quality:

Royal (Gründl)

100 % virgin wool (merino extrafine, superwash)

50 g / 125 m

Size:

Head circumference approx. 53 - 56 cm

Usage:

approx. 100 g Cl. 14 (anthracite), 1 fleece bobble deluxe (Gründl) Cl. 14, 50 rhinestone to sew on, Ø 5 - 6 mm

Needle size:

Needle 3.5 - 4.0

Sample:

plain right in Rd.: only knt. ri S

Collar pattern: alternately kn. 1 S ri and 1 S le

Honeycomb pattern:

see knitting chart, in the width, always rpt. the repeating pattern over 8 S, in the height, always rpt. the 1st - 8th Rd.

Stitch test (honeycomb pattern):

39 s x 34 Rd. = 10 cm x 10 cm

Instructions:

The hat is knitted in Rd.

Cast on 128 S, distributed over 4 needles of the needle set (32 S per needle) and knt. 8.5 cm (= 29 Rd.) in the collar pattern. Then continue working in the honeycomb pattern, picking up 32 S in the 1st Rd. (after each 4th S, knt. 1 S ri interlaced from the cross stitch) (= 160 M).

In a height of 16.5 cm (= 56 Rd. = in the height 7 x the 1st - 8th Rd. of the knitting chart), continue working from the start of the honeycomb pattern plain right and knt. the drops as follows:

57th Rd.: knt. tog. * 2 S ri, 4 S, knt. tog. 2 S interlaced, always rpt. from * (= 120 S)

knt. 58th Rd. without drops.

59. Rd.: knt. tog. * 1 S ri, 2 S ri interlaced, knt. tog. 2 S ri, always rpt. from * (= 80 S)

knt. 60th + 61st Rd. without drops.

62nd Rd: mark ever 8th S and knt. tog. each of the marked S with the previous S ri (= 70 S)

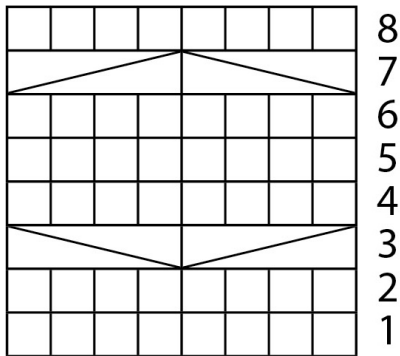
Rpt. the drops as described in the 62nd Rd. exactly over the marked S another 1 x in the following 2 Rd and then 4 x in each Rd (= 20 S). Knt. tog. each 2 S ri in the following Rd. Then pull the remaining 10 S together with the working thread. Fix the fleece bobble to the hat. Sew on the rhinestones (in both the width and height, one stone at each 2nd "honeycomb", see image).

Abbreviations:

Cl. = colour(s) • S = stitch(es) • Rd. = round(s) • ri = right • le = left • rpt. = repeat • knt. = knit • pck. = pick up • i.e. = in each one • knt. tog. = knit together


Royal


Hat in honeycomb pattern



Repeating
pattern = 8 S

 = 1 S ri

 = interlace 4 S to ri (= place 2 S on 1 auxiliary needle behind the work, the following 2 S ri, then knt. the S of the auxiliary needle ri)

 = interlace 4 S to le (= place 2 S on 1 auxiliary needle in front of the work, the following 2 S ri, then knt. the S of the auxiliary needle ri)